

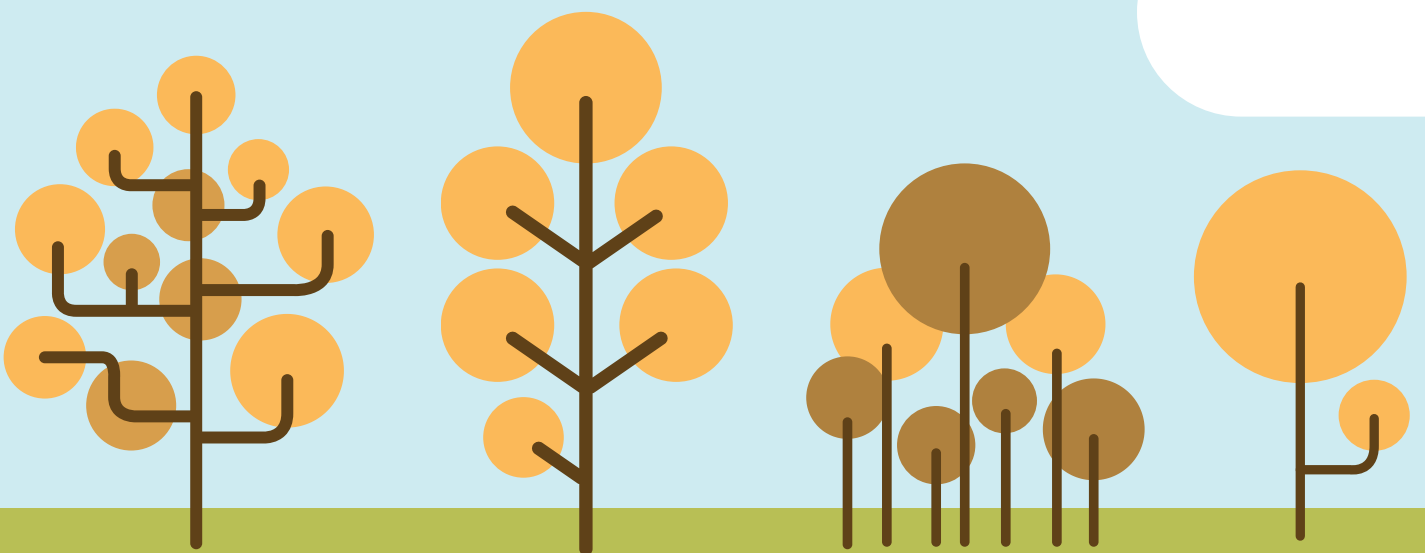
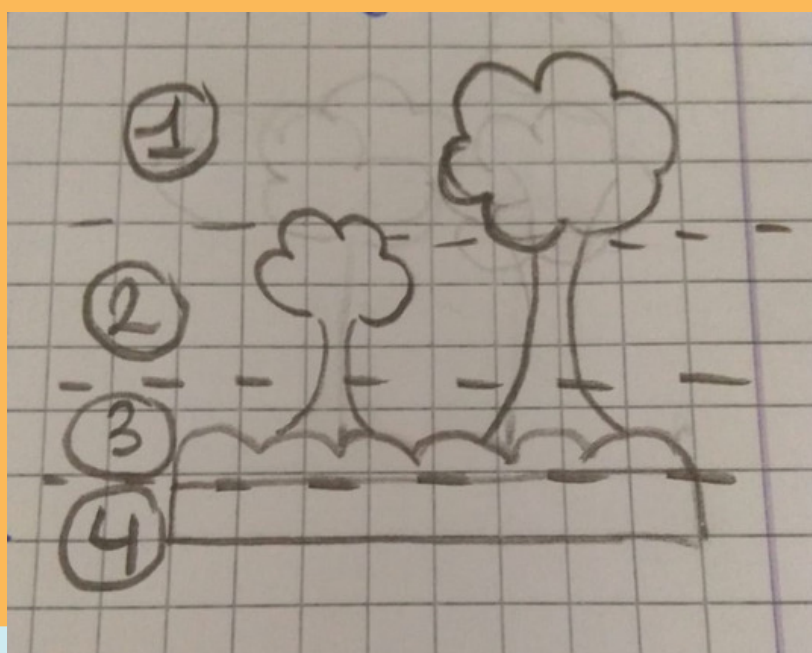
# woodland

## what is it ?

Woodland is a low-density forest with plenty of sunlight and limited shade. It forms an open habitat. Woodlands have an understorey of shrubs and herbaceous plants including grasses.

### LAYERS

- 1) CANOPY
- 2) UNDERSTOREY
- 3) FIELD LAYER
- 4) GROUND LAYER

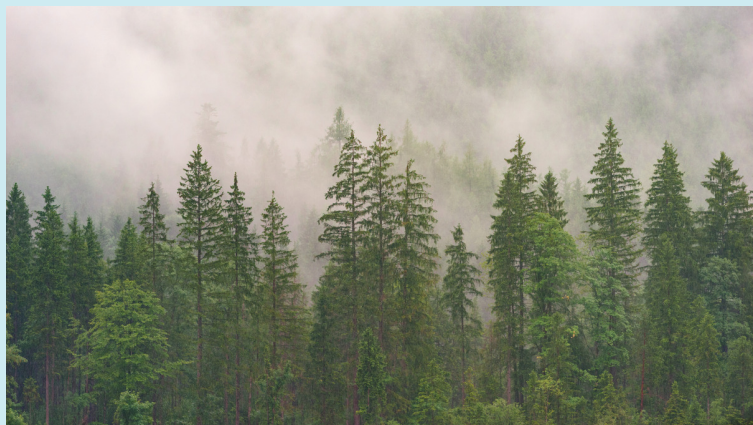


**VEGETATION**  
**FERN**  
**TREES**  
**GRASS**  
**MOSSES**  
**SHRUBS**



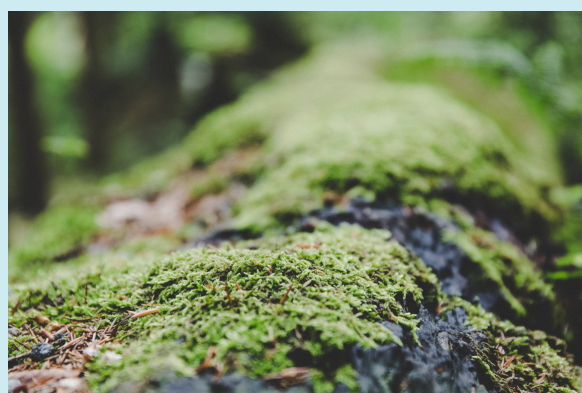
FERN

TREES

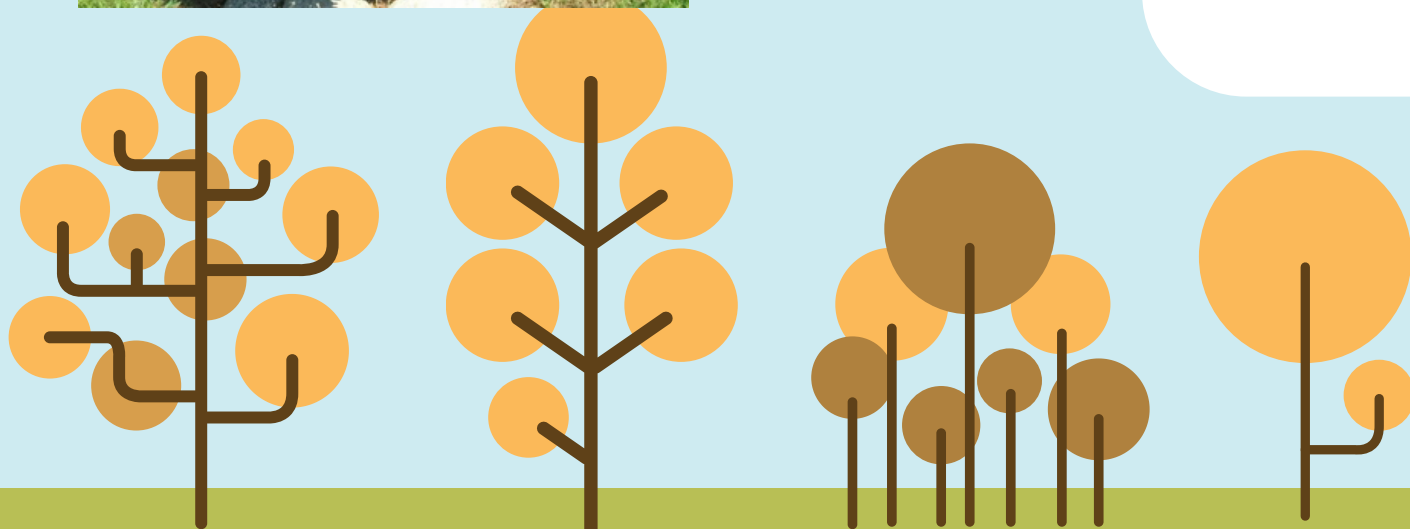


GRASS

MOSSES



SHRUBS



## TREES

CONIFEROUS  
produce in cones  
DECIDUOUS  
lose their leaves in the  
winter

## UNDERSTOREY

## SHRUBS

## FIELD LAYER

Plant such as  
FERN or  
GRASSES

## GROUND LAYER

MOSSES  
IVY  
LICHEN  
VIOLETS  
BLUE BELLS

